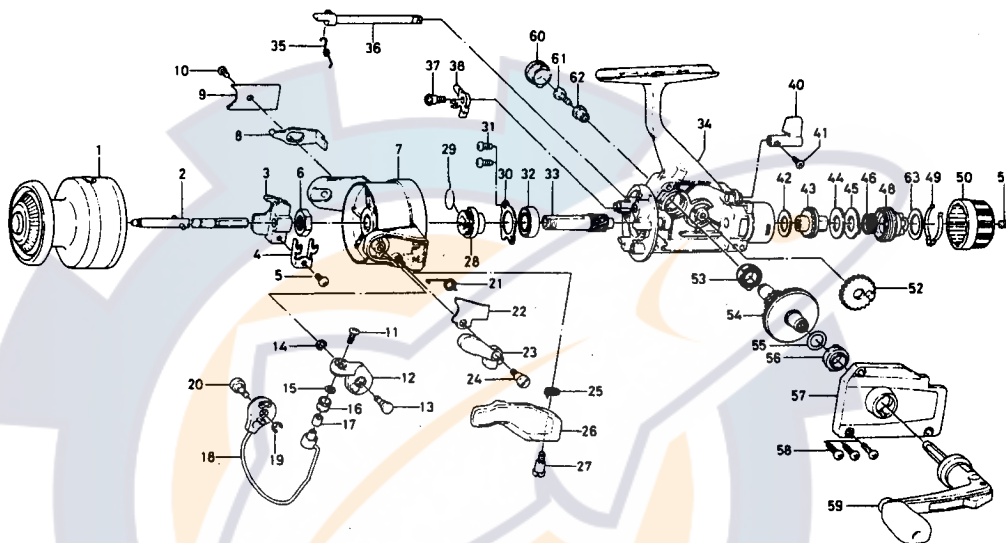




SPINNING REEL SGA 1055/1355/GS800RDA



Key No.	Parts No.	Parts Name	Key No.	Parts No.	Parts Name
1	383-5201	Spool	36	B44-8401	Anti-reverse cam
2	B83-4501	Main shaft	37	B61-8101	Anti-reverse claw screw
3	B62-0702	Oscillating slider	38	B90-3001	Anti-reverse claw
4	B62-0801	Oscillating slider retainer	40	B83-3401	Anti-reverse lever
5	351-1804	Oscillating slider screw	41	B12-8201	Anti-reverse lever screw
6	B67-9401	Rotor nut	42	B48-9901	Drag washer A
7	B81-8301	Rotor	43	B83-3602	Click gear
8	B83-4301	Bail kick lever	44	B76-0501	Drag washer B
9	B74-7303	Bail kick lever cover	45	B49-0102	Drag washer C
10	B83-4401	Bail kick lever cover screw	46	141-8721	Drag knob spring
11	B67-9303	Bail screw	48	B74-7603	Drag screw
12	B67-4601	Arm lever	49	B74-7702	Drag washer spring
13	B83-3801	Arm lever screw	50	B82-5505	Drag knob
14	320-5901	Arm lever screw retainer	51	352-1105	Drag knob screw
15	B55-4301	Bail washer	52	B74-2501	Oscillating gear
16	250-3921	Line roller	53	B84-3901	Bearing
17	B45-1501	Roller collar	54	B83-4701	Drive gear
18	B83-4001	Bail	55	373-7800	Drive gear washer
19	320-5901	Bail holder screw retainer	56	B84-3901	Bearing
20	B83-4201	Bail holder screw	57	B83-4801	Body cover
21	B83-3701	Bail spring	58	B83-5001	Body cover screw
22	B83-3901	Bail spring cover	59	B83-5103	Handle
23	B67-4901	Trigger plate	60	B67-9802	Handle screw cap
24	B68-8801	Bail spring cover screw	61	363-8511	Handle screw
25	B67-5201	Trigger spring	62	501-8501	Handle collar
26	B67-5101	Trigger lever	63	B90-8201	Drag washer D
27	B68-8802	Trigger screw			
28	B83-5601	Ratchet			
29	145-0501	Anti-reverse claw spring			
30	B45-6401	Ball bearing ret. washer			
31	B83-4402	Ball bearing ret. washer screw			
32	637-5701	Ball bearing			
33	B83-3501	Pinion gear			
34	B83-3301	Body			
35	B44-8501	Anti-reverse cam spring			

GS800RDA/SGA1355 Special Parts		
* 1		Spool
7	B81-8501	Rotor
8	B83-5701	Bail kick lever
18	B83-7601	Bail
*34		Body cover
*57		Body cover

*Order by model and part name due to color change.